

NOTES:

1) FOR OPTIMAL REINFORCEMENT PLACEMENT IN THE NUDURA FORM, SPACING OF HORIZONTAL REINFORCEMENT TO BE SPECIFIED AT 18" (457mm) O.C. AND VERTICAL REINFORCEMENT TO BE SPECIFIED AT MULTIPLES OF 8" (203mm) O.C. REFER TO NUDURA REINFORCEMENT PLACEMENT DETAILS.

This detail is for general informational purposes only. The project design professional determines, in its sole discretion, whether this detail or a functionally equivalent detail is best suited for the project with respect to any architecture, engineering, and design requirements, including any local building code requirements. If this document is not reviewed and the product is not approved for use by a licensed design professional, the customer agrees that the detail may contain substantive flaws requiring correction, and hereby releases Tremco CPG Inc. from any and all liability related to the design and installation of the product. This detail is subject to change without notice. Contact Tremco to ensure you have the most recent version.

Combustible Construction - Floor at Grade



Nudura Technical Support: 866-468-6299
International: +1 705-726-9499

Detail: Nudura 6" (152mm) Form Unit, Ledger Board Detail, Exterior Finish as Specified, Perp. to Wall

Drawn by: JN

Checked by: KS

Scale: 1:8

Revision #: 04

Revised by: KAB

Date: 3/13/2024

File Name:

C6A01



Construction Products Group

www.tremcocpg.com

EXTERIOR FINISH
AS SPECIFIED

TREMCO EXOAIR 230,
ENVIRODRI OR FUNCTIONAL
EQUIVALENT

HORIZ/VERT REINFORCEMENT
AS PER CODE OR AS
SPECIFIED (SEE NOTE 1)

WET SET DOWELS TO MATCH
VERTICAL REINFORCEMENT
BETWEEN POUR OR AS
SPECIFIED

FINISHED GRADE
MINIMUM 6" (152mm)
OR AS PER CODE

TREMCO/NUDURA APPROVED
PARGE COAT

TREMCO TREMDRAIN AS
SPECIFIED AND/OR
TREMCO PROTECTION
BOARD

TREMCO/NUDURA APPROVED
FLUID APPLIED OR SHEET
WATERPROOFING MEMBRANE

MIN $\frac{1}{2}$ " (13mm) GYPSUM BOARD

SUB FLOOR

JOISTS/TRUSSES
AS SPECIFIED

DOUBLE BOLT
SHOWN OR
STAGGERED
ANCHOR BOLTS
AS SPECIFIED

EPS FOAM CUT AT
BOLT LOCATIONS
ONLY

MIN $\frac{1}{2}$ " (13mm)
GYPSUM BOARD

NUDURA 6" (152mm)
STANDARD FORM
UNIT

4 $\frac{1}{2}$ " [114mm]

2 $\frac{1}{2}$ " (64mm) MIN.

2" (51mm) MIN.

2" (51mm) MIN.

EQUAL TO RIM JOIST MINIMUM 7 $\frac{1}{2}$ " (191mm)

NOTES:

1) FOR OPTIMAL REINFORCEMENT PLACEMENT IN THE NUDURA FORM, SPACING OF HORIZONTAL REINFORCEMENT TO BE SPECIFIED AT 18" (457mm) O.C. AND VERTICAL REINFORCEMENT TO BE SPECIFIED AT MULTIPLES OF 8" (203mm) O.C. REFER TO NUDURA REINFORCEMENT PLACEMENT DETAILS.

This detail is for general informational purposes only. The project design professional determines, in its sole discretion, whether this detail or a functionally equivalent detail is best suited for the project with respect to any architecture, engineering, and design requirements, including any local building code requirements. If this document is not reviewed and the product is not approved for use by a licensed design professional, the customer agrees that the detail may contain substantive flaws requiring correction, and hereby releases Tremco CPG Inc. from any and all liability related to the design and installation of the product. This detail is subject to change without notice. Contact Tremco to ensure you have the most recent version.

Combustible Construction - Floor at Grade



Nudura Technical Support: 866-468-6299
International: +1 705-726-9499

Detail: Nudura 6" (152mm) Form Unit, Proprietary Embedded Joist Anchorage System, Exterior Finish as Specified

Drawn by: TVC

Checked by: KS

Scale: 1:8

Revision #: 05

Revised by: KAB

Date: 3/13/2024

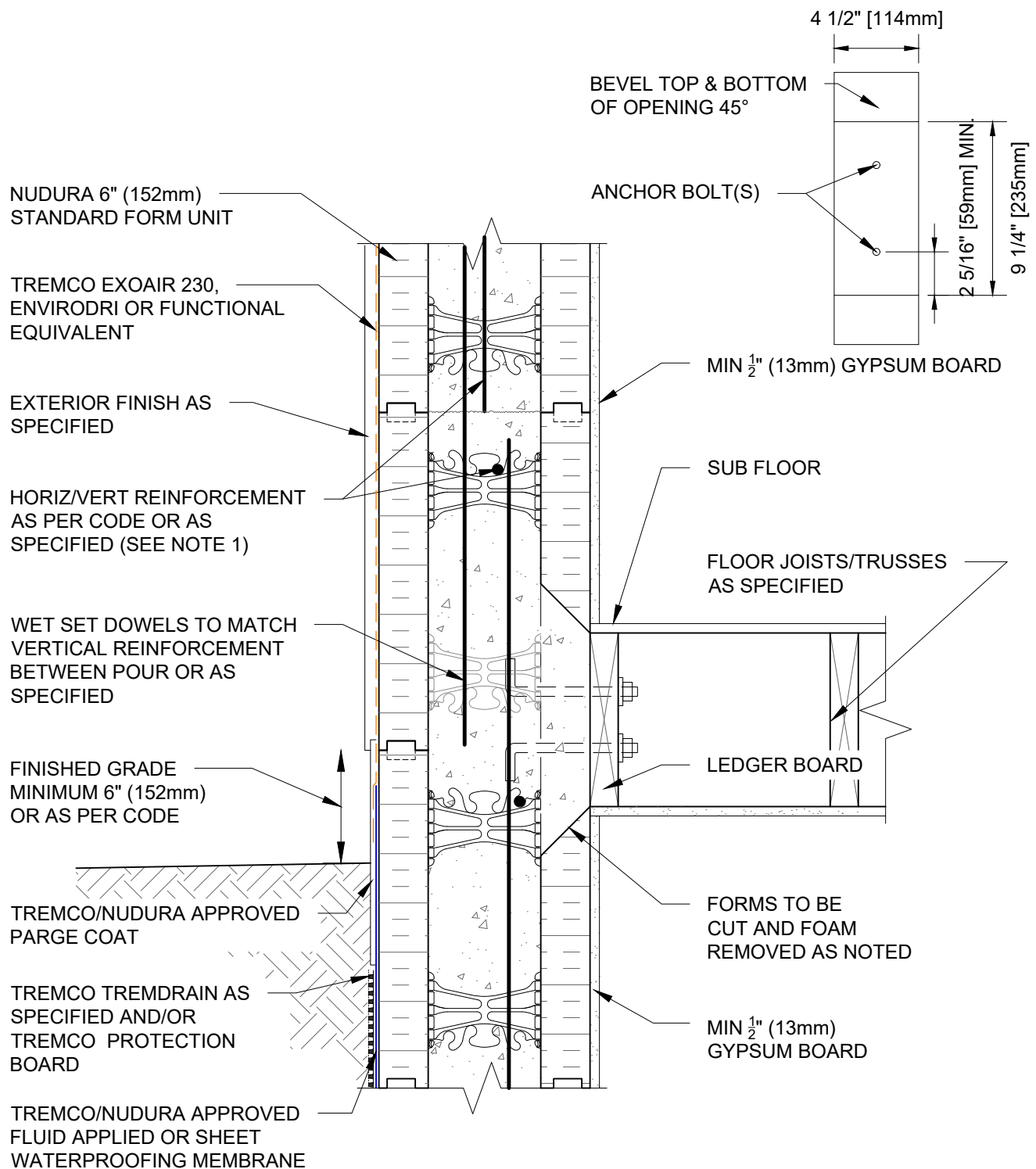
www.tremcocpg.com

File Name:

C6A02



Construction Products Group



NOTES:

1) FOR OPTIMAL REINFORCEMENT PLACEMENT IN THE NUDURA FORM, SPACING OF HORIZONTAL REINFORCEMENT TO BE SPECIFIED AT 18" (457mm) O.C. AND VERTICAL REINFORCEMENT TO BE SPECIFIED AT MULTIPLES OF 8" (203mm) O.C. REFER TO NUDURA REINFORCEMENT PLACEMENT DETAILS.

This detail is for general informational purposes only. The project design professional determines, in its sole discretion, whether this detail or a functionally equivalent detail is best suited for the project with respect to any architecture, engineering, and design requirements, including any local building code requirements. If this document is not reviewed and the product is not approved for use by a licensed design professional, the customer agrees that the detail may contain substantive flaws requiring correction, and hereby releases Tremco CPG Inc. from any and all liability related to the design and installation of the product. This detail is subject to change without notice. Contact Tremco to ensure you have the most recent version.

Combustible Construction - Floor at Grade

Detail: Nudura 6" (152mm) Form Unit, Ledger Board Detail, Exterior Finish as Specified, Joists Parallel to Wall

Drawn by: TVC

Checked by: KS

Scale: 1:8

Revision #: 04

Revised by: KAB

Date: 3/13/2024

File Name:

C6A04

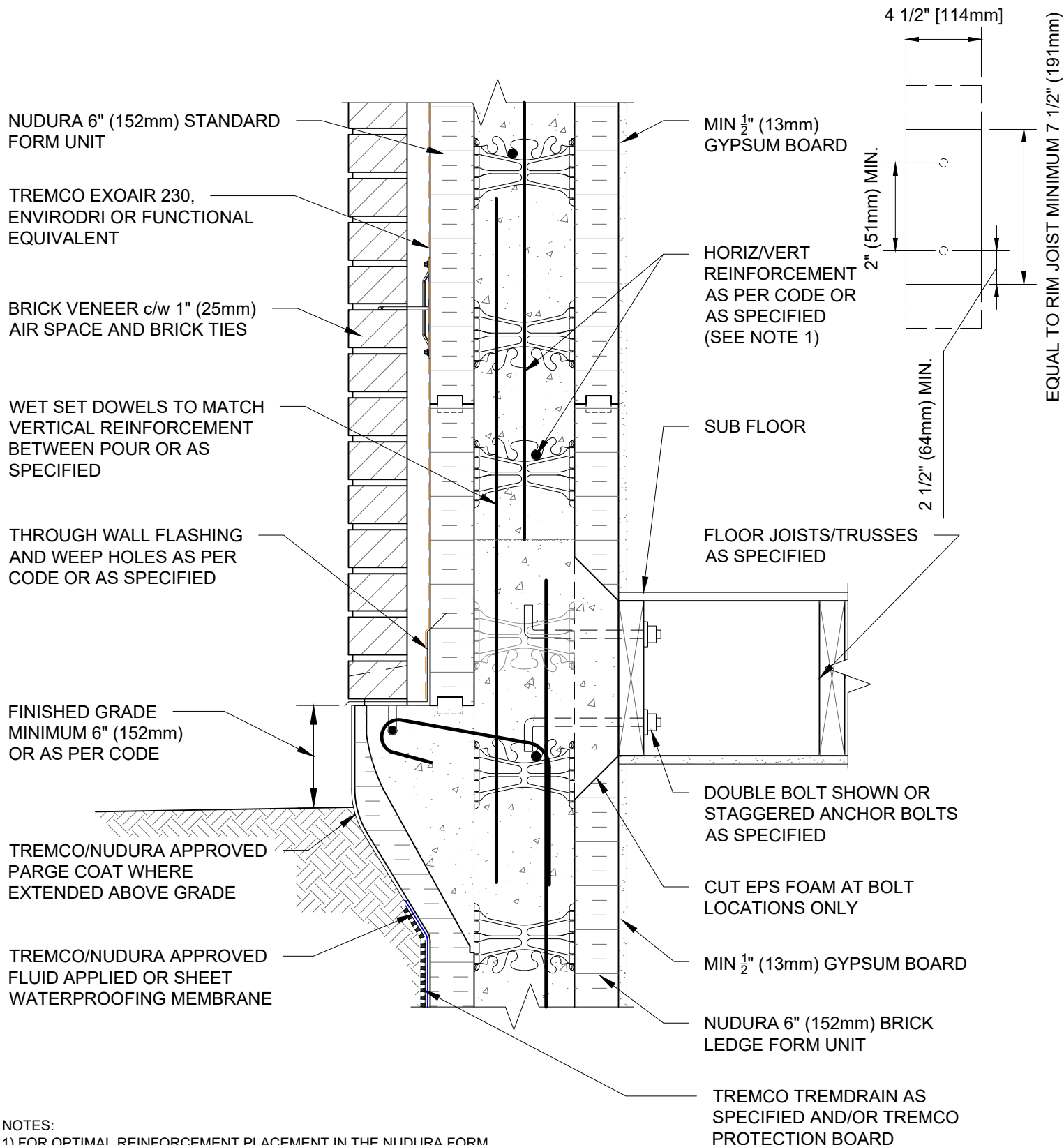


Nudura Technical Support: 866-468-6299
International: +1 705-726-9499

www.tremcocpg.com



Construction Products Group



NOTES:

1) FOR OPTIMAL REINFORCEMENT PLACEMENT IN THE NUDURA FORM, SPACING OF HORIZONTAL REINFORCEMENT TO BE SPECIFIED AT 18" (457mm) O.C. AND VERTICAL REINFORCEMENT TO BE SPECIFIED AT MULTIPLES OF 8" (203mm) O.C. REFER TO NUDURA REINFORCEMENT PLACEMENT DETAILS.

2.1) FINISHED GRADE LEVEL SPECIFIED FOR FROST PRONE AREAS. FOR ALTERNATIVE GRADE LEVEL SEE DETAIL C6A33.

This detail is for general informational purposes only. The project design professional determines, in its sole discretion, whether this detail or a functionally equivalent detail is best suited for the project with respect to any architecture, engineering, and design requirements, including any local building code requirements. If this document is not reviewed and the product is not approved for use by a licensed design professional, the customer agrees that the detail may contain substantive flaws requiring correction, and hereby releases Tremco CPG Inc. from any and all liability related to the design and installation of the product. This detail is subject to change without notice. Contact Tremco to ensure you have the most recent version.

Combustible Construction - Floor at Grade

Detail: Nudura 6" (152mm) Form Unit, Proprietary Embedded Joist Multi-Purpose Hanger, Brick Veneer Finish, Joists Parallel to Wall

File Name:

Drawn by: TVC

Checked by: KS

Scale: 1:8

C6A05

Revision #: 05

Revised by: KAB

Date: 3/13/2024

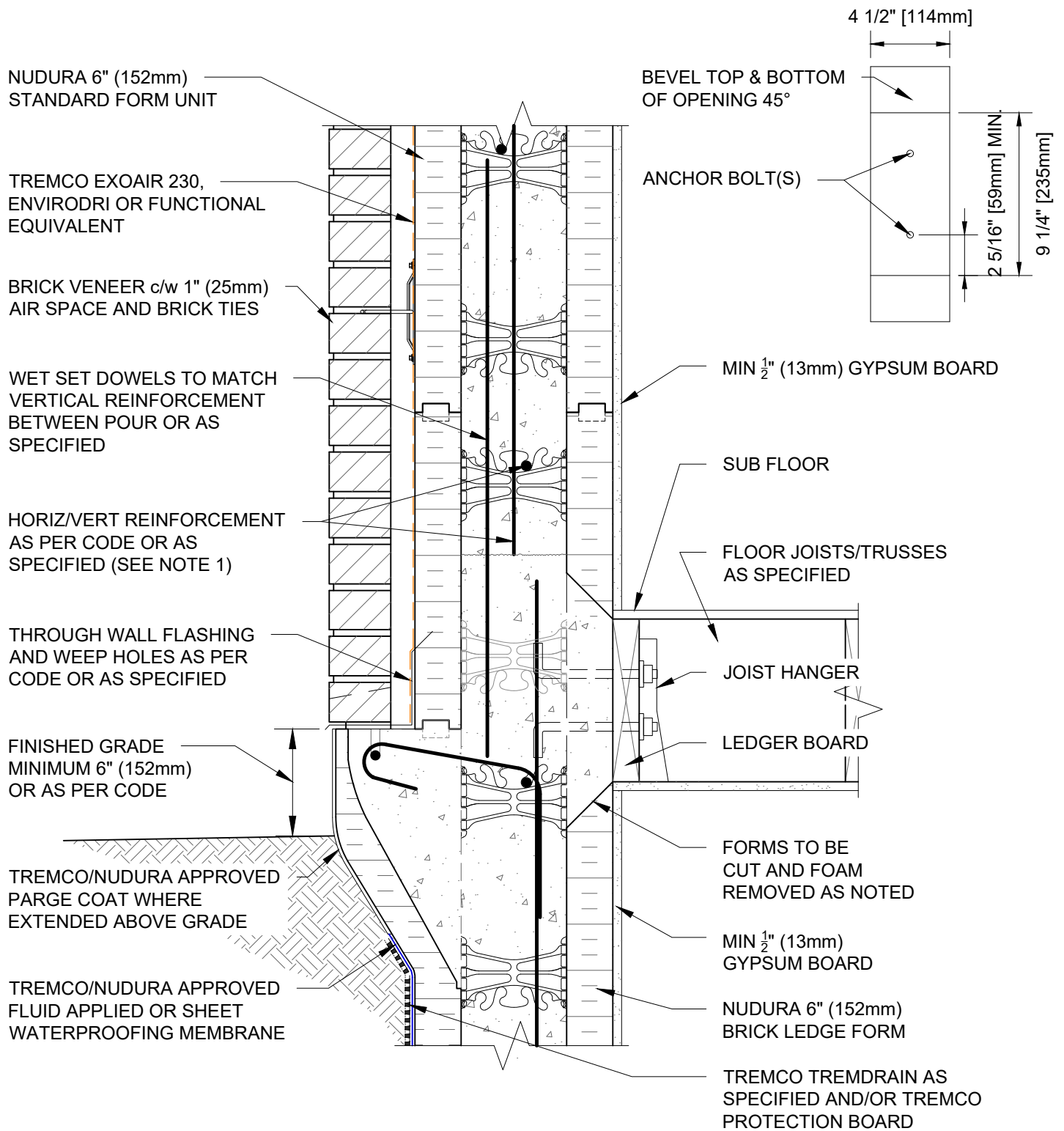
www.tremcocpg.com



Nudura Technical Support: 866-468-6299
International: +1 705-726-9499



Construction Products Group



NOTES:

1) FOR OPTIMAL REINFORCEMENT PLACEMENT IN THE NUDURA FORM, SPACING OF HORIZONTAL REINFORCEMENT TO BE SPECIFIED AT 18" (457mm) O.C. AND VERTICAL REINFORCEMENT TO BE SPECIFIED AT MULTIPLES OF 8" (203mm) O.C. REFER TO NUDURA REINFORCEMENT PLACEMENT DETAILS.

2.1) FINISHED GRADE LEVEL SPECIFIED FOR FROST PRONE AREAS. FOR ALTERNATIVE GRADE LEVEL SEE DETAIL C6A29.

This detail is for general informational purposes only. The project design professional determines, in its sole discretion, whether this detail or a functionally equivalent detail is best suited for the project with respect to any architecture, engineering, and design requirements, including any local building code requirements. If this document is not reviewed and the product is not approved for use by a licensed design professional, the customer agrees that the detail may contain substantive flaws requiring correction, and hereby releases Tremco CPG Inc. from any and all liability related to the design and installation of the product. This detail is subject to change without notice. Contact Tremco to ensure you have the most recent version.

Combustible Construction - Floor at Grade



Nudura Technical Support: 866-468-6299
International: +1 705-726-9499

Detail: Nudura 6" (152mm) Form Unit, Ledger Board Connection,
Brick Veneer Finish

Drawn by: JN/NL

Checked by: KS

Scale: 1:8

Revision #: 04

Revised by: KAB

Date: 3/13/2024

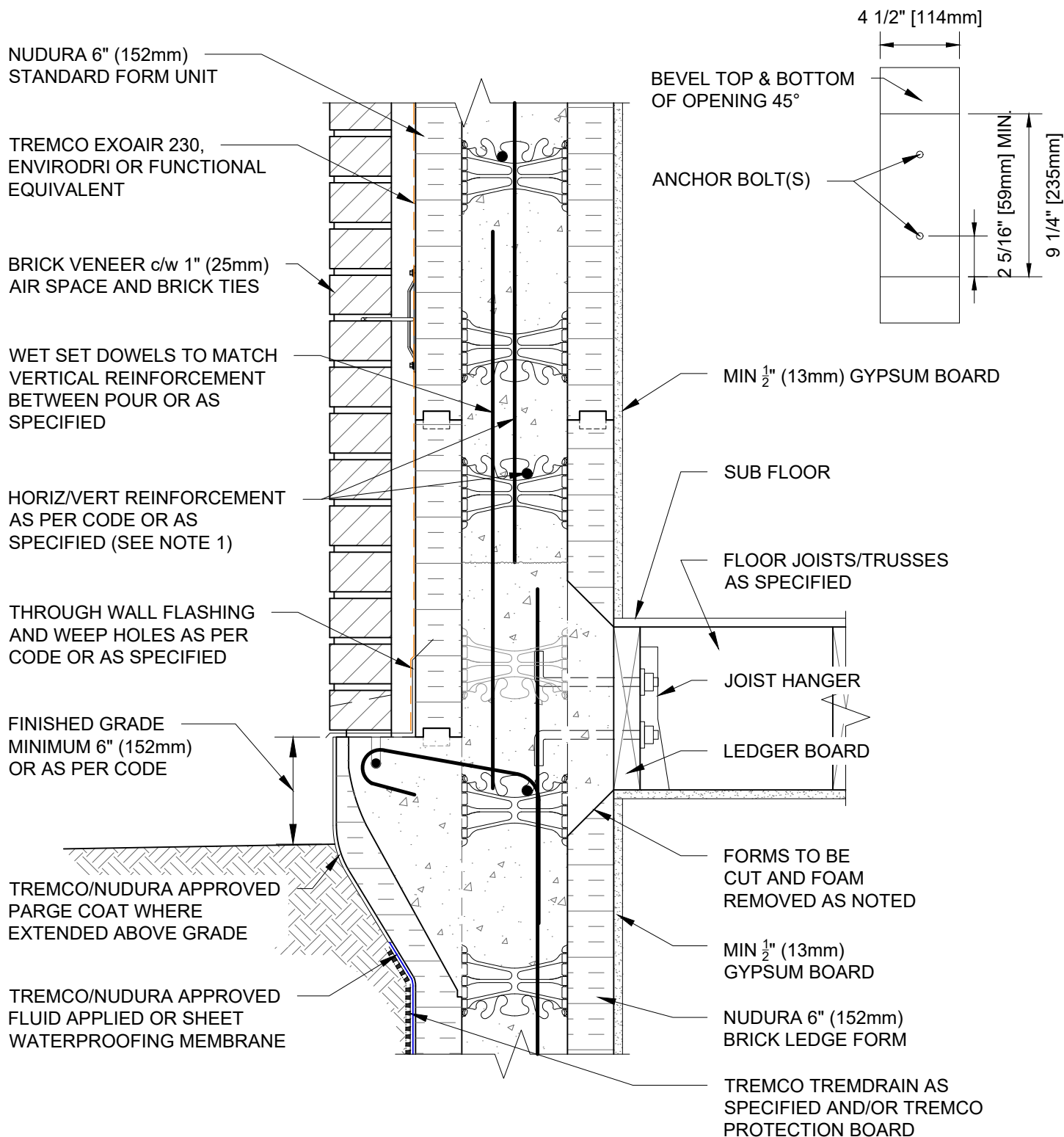
File Name:

C6A07



Construction Products Group

www.tremcocpg.com



NOTES:

1) FOR OPTIMAL REINFORCEMENT PLACEMENT IN THE NUDURA FORM, SPACING OF HORIZONTAL REINFORCEMENT TO BE SPECIFIED AT 18" (457mm) O.C. AND VERTICAL REINFORCEMENT TO BE SPECIFIED AT MULTIPLES OF 8" (203mm) O.C. REFER TO NUDURA REINFORCEMENT PLACEMENT DETAILS.

2.1) FINISHED GRADE LEVEL SPECIFIED FOR FROST PRONE AREAS. FOR ALTERNATIVE GRADE LEVEL SEE DETAIL C6A32.

This detail is for general informational purposes only. The project design professional determines, in its sole discretion, whether this detail or a functionally equivalent detail is best suited for the project with respect to any architecture, engineering, and design requirements, including any local building code requirements. If this document is not reviewed and the product is not approved for use by a licensed design professional, the customer agrees that the detail may contain substantive flaws requiring correction, and hereby releases Tremco CPG Inc. from any and all liability related to the design and installation of the product. This detail is subject to change without notice. Contact Tremco to ensure you have the most recent version.

Combustible Construction - Floor at Grade



Nudura Technical Support: 866-468-6299
International: +1 705-726-9499

Detail: Nudura 6" (152mm) Form Unit, Ledger Board Connection,
Brick Veneer Finish, Parallel to Wall

Drawn by: JN/NL

Checked by: KS

Scale: 1:8

Revision #: 04

Revised by: KAB

Date: 3/13/2024

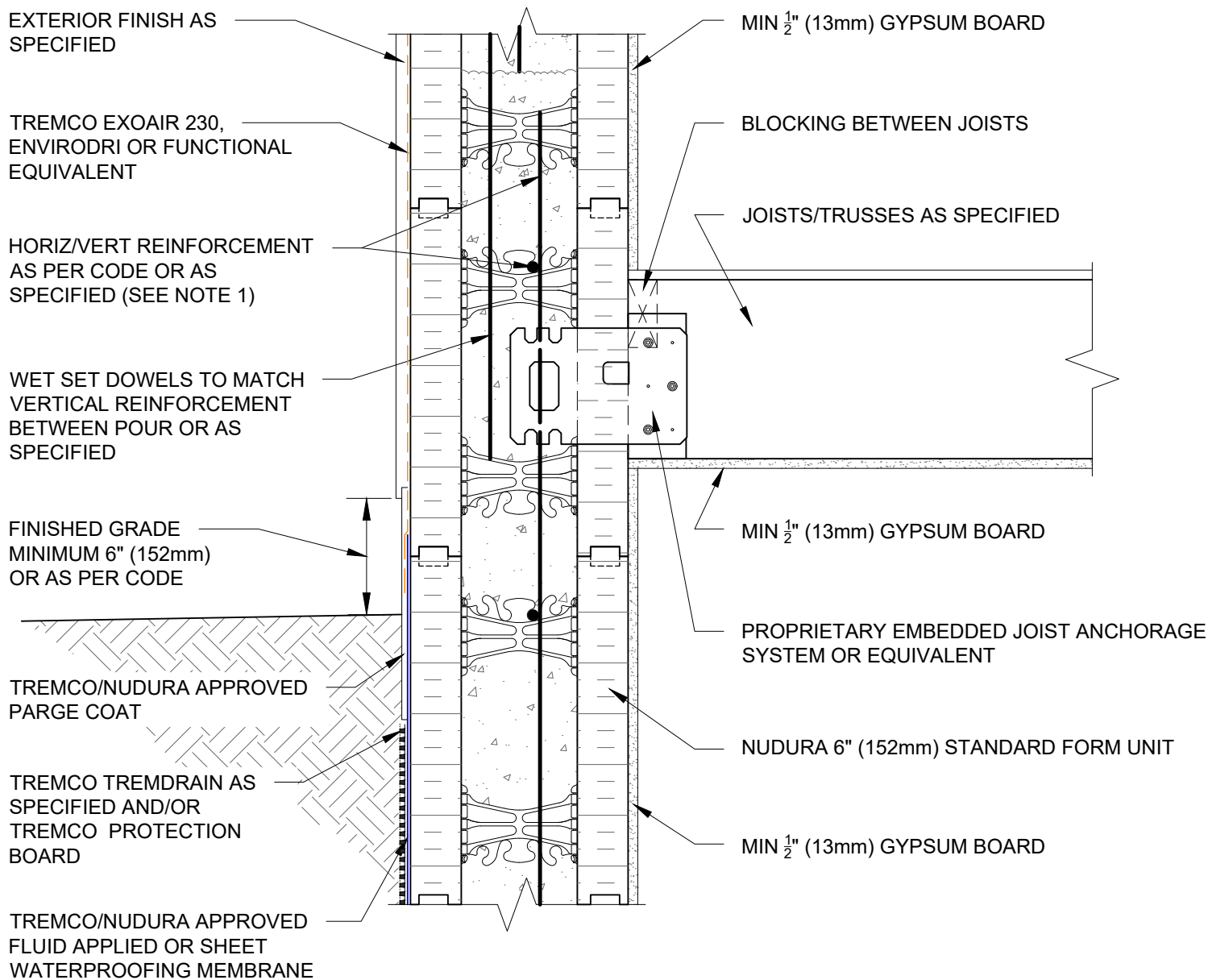
File Name:

C6A08



Construction Products Group

www.tremcocpg.com





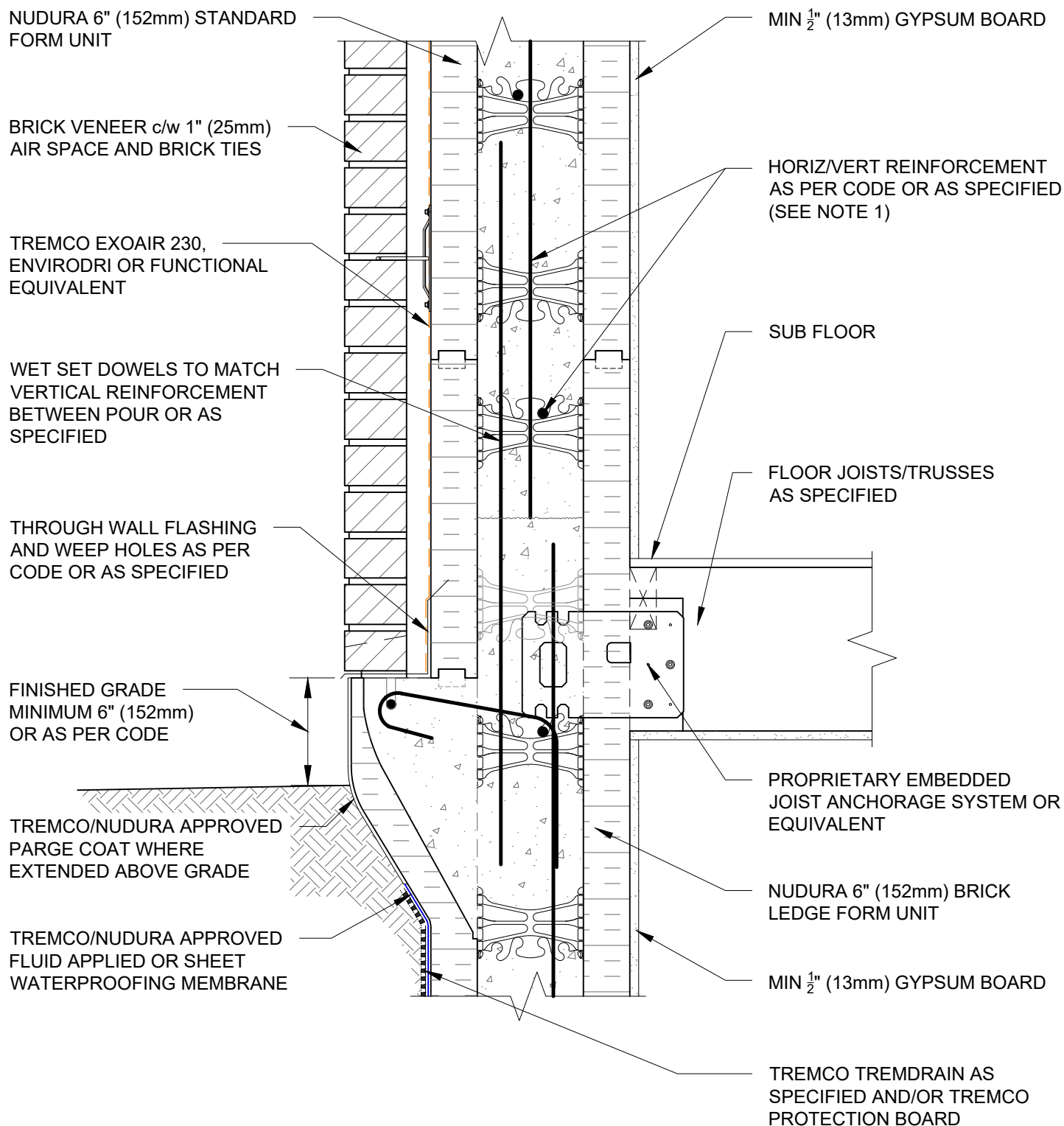
NOTES:

1) FOR OPTIMAL REINFORCEMENT PLACEMENT IN THE NUDURA FORM, SPACING OF HORIZONTAL REINFORCEMENT TO BE SPECIFIED AT 18" (457mm) O.C. AND VERTICAL REINFORCEMENT TO BE SPECIFIED AT MULTIPLES OF 8" (203mm) O.C. REFER TO NUDURA REINFORCEMENT PLACEMENT DETAILS.

This detail is for general informational purposes only. The project design professional determines, in its sole discretion, whether this detail or a functionally equivalent detail is best suited for the project with respect to any architecture, engineering, and design requirements, including any local building code requirements. If this document is not reviewed and the product is not approved for use by a licensed design professional, the customer agrees that the detail may contain substantive flaws requiring correction, and hereby releases Tremco CPG Inc. from any and all liability related to the design and installation of the product. This detail is subject to change without notice. Contact Tremco to ensure you have the most recent version.

Combustible Construction - Floor at Grade

 Nudura Technical Support: 866-468-6299 International: +1 705-726-9499	Detail: Nudura 6" (152mm) Form Unit, Proprietary Embedded Joist Anchorage System, Exterior Finish as Specified			File Name:
	Drawn by: JN	Checked by: KS	Scale: 1:8	C6A11
	Revision #: 05	Revised by: KAB	Date: 3/13/2024	
	www.tremcocpa.com			
	 Construction Products Group			



NOTES:

1) FOR OPTIMAL REINFORCEMENT PLACEMENT IN THE NUDURA FORM, SPACING OF HORIZONTAL REINFORCEMENT TO BE SPECIFIED AT 18" (457mm) O.C. AND VERTICAL REINFORCEMENT TO BE SPECIFIED AT MULTIPLES OF 8" (203mm) O.C. REFER TO NUDURA REINFORCEMENT PLACEMENT DETAILS.

2.1) FINISHED GRADE LEVEL SPECIFIED FOR FROST PRONE AREAS. FOR ALTERNATIVE GRADE LEVEL SEE DETAIL C6A30.

This detail is for general informational purposes only. The project design professional determines, in its sole discretion, whether this detail or a functionally equivalent detail is best suited for the project with respect to any architecture, engineering, and design requirements, including any local building code requirements. If this document is not reviewed and the product is not approved for use by a licensed design professional, the customer agrees that the detail may contain substantive flaws requiring correction, and hereby releases Tremco CPG Inc. from any and all liability related to the design and installation of the product. This detail is subject to change without notice. Contact Tremco to ensure you have the most recent version.

Combustible Construction - Floor at Grade



Nudura Technical Support: 866-468-6299
International: +1 705-726-9499

Detail: Nudura 6" (152mm) Form Unit, Proprietary Embedded Joist Anchorage System, Brick Veneer Finish

Drawn by: JN/NL

Checked by: KS

Scale: 1:8

Revision #: 06

Revised by: KAB

Date: 3/13/2024

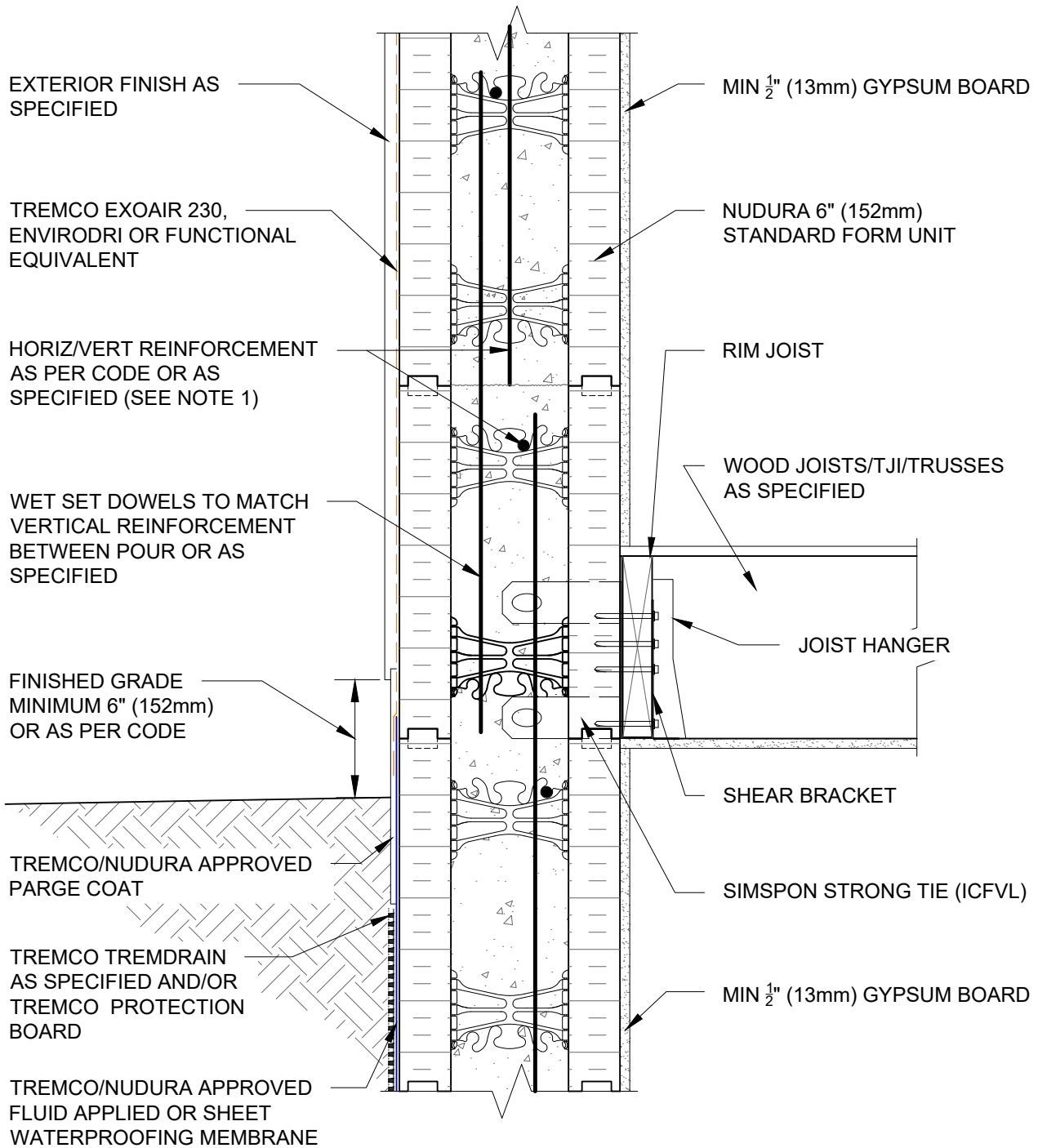
File Name:

C6A15



Construction Products Group

www.tremcocpg.com



NOTES:

1) FOR OPTIMAL REINFORCEMENT PLACEMENT IN THE NUDURA FORM, SPACING OF HORIZONTAL REINFORCEMENT TO BE SPECIFIED AT 18" (457mm) O.C. AND VERTICAL REINFORCEMENT TO BE SPECIFIED AT MULTIPLES OF 8" (203mm) O.C. REFER TO NUDURA REINFORCEMENT PLACEMENT DETAILS.

This detail is for general informational purposes only. The project design professional determines, in its sole discretion, whether this detail or a functionally equivalent detail is best suited for the project with respect to any architecture, engineering, and design requirements, including any local building code requirements. If this document is not reviewed and the product is not approved for use by a licensed design professional, the customer agrees that the detail may contain substantive flaws requiring correction, and hereby releases Tremco CPG Inc. from any and all liability related to the design and installation of the product. This detail is subject to change without notice. Contact Tremco to ensure you have the most recent version.

Combustible Construction - Floor at Grade



Nudura Technical Support: 866-468-6299
International: +1 705-726-9499

Detail: Nudura 6" (152mm) Form Unit, Simpson Ledger Hanger System,
Exterior Finish as Specified, Perp. to Wall at Grade

Drawn by: TVC

Checked by: KS

Scale: 1:8

Revision #: 04

Revised by: KAB

Date: 3/13/2024

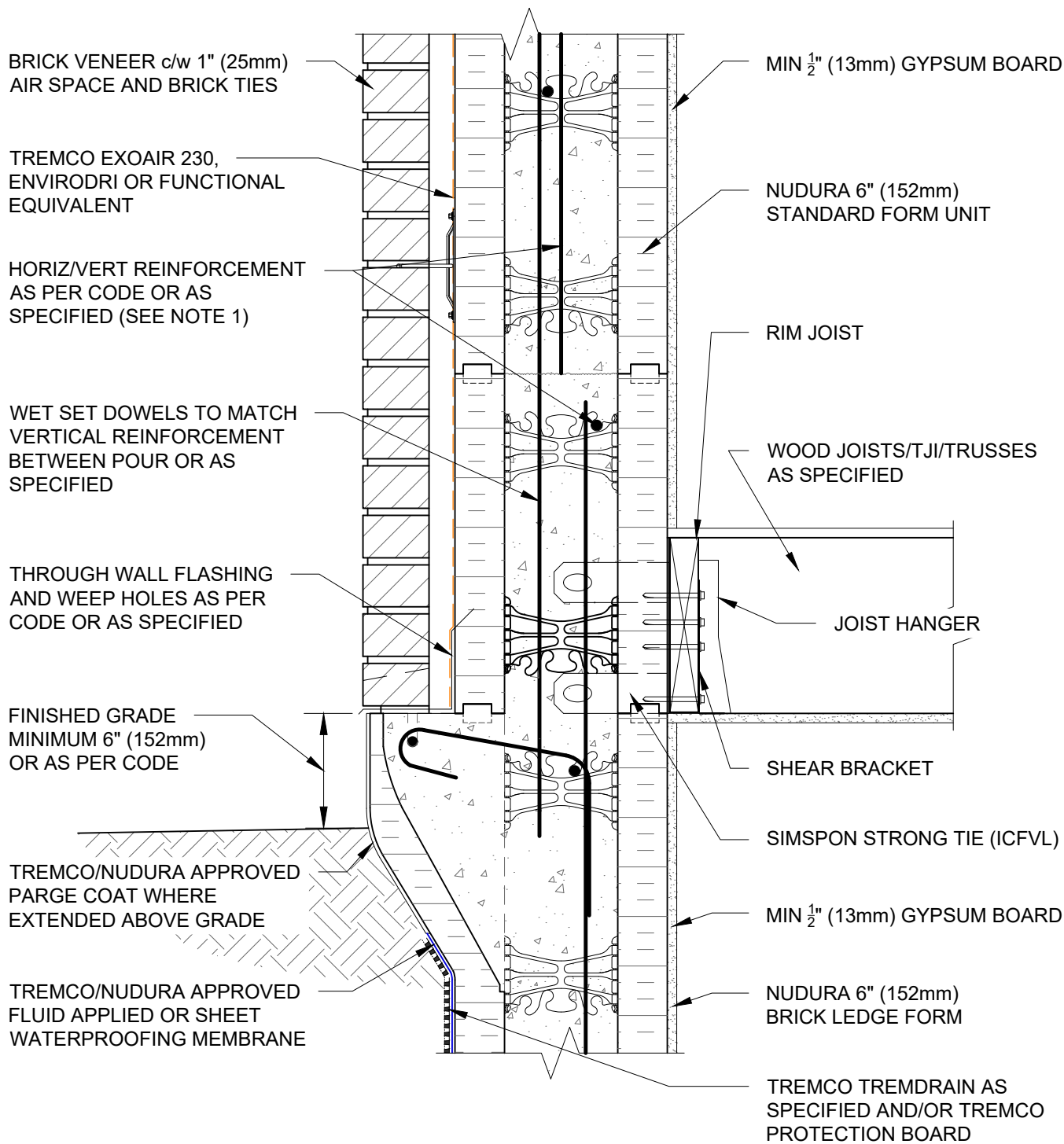
File Name:

C6A21



Construction Products Group

www.tremcocpg.com



NOTES:

1) FOR OPTIMAL REINFORCEMENT PLACEMENT IN THE NUDURA FORM, SPACING OF HORIZONTAL REINFORCEMENT TO BE SPECIFIED AT 18" (457mm) O.C. AND VERTICAL REINFORCEMENT TO BE SPECIFIED AT MULTIPLES OF 8" (203mm) O.C. REFER TO NUDURA REINFORCEMENT PLACEMENT DETAILS.

2.1) FINISHED GRADE LEVEL SPECIFIED FOR FROST PRONE AREAS. FOR ALTERNATIVE GRADE LEVEL SEE DETAIL C6A31.

This detail is for general informational purposes only. The project design professional determines, in its sole discretion, whether this detail or a functionally equivalent detail is best suited for the project with respect to any architecture, engineering, and design requirements, including any local building code requirements. If this document is not reviewed and the product is not approved for use by a licensed design professional, the customer agrees that the detail may contain substantive flaws requiring correction, and hereby releases Tremco CPG Inc. from any and all liability related to the design and installation of the product. This detail is subject to change without notice. Contact Tremco to ensure you have the most recent version.

Combustible Construction - Floor at Grade



Nudura Technical Support: 866-468-6299
International: +1 705-726-9499

Detail: Nudura 6" (152mm) Form Unit, Simpson Ledger Hanger System,
Brick Veneer Finish

Drawn by: TVC

Checked by: KS

Scale: 1:8

Revision #: 04

Revised by: KAB

Date: 3/13/2024

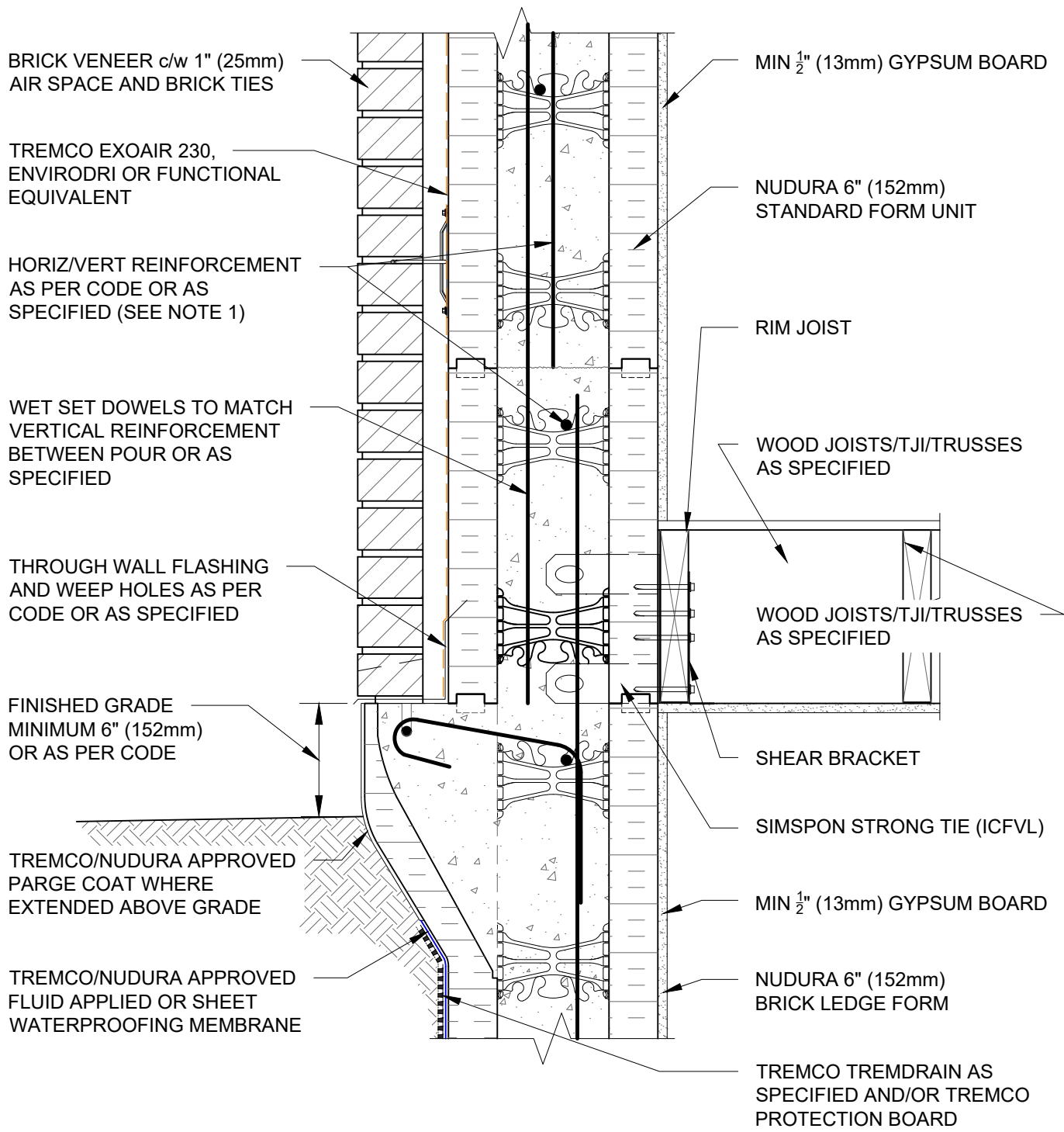
File Name:

C6A22



Construction Products Group

www.tremcocpg.com



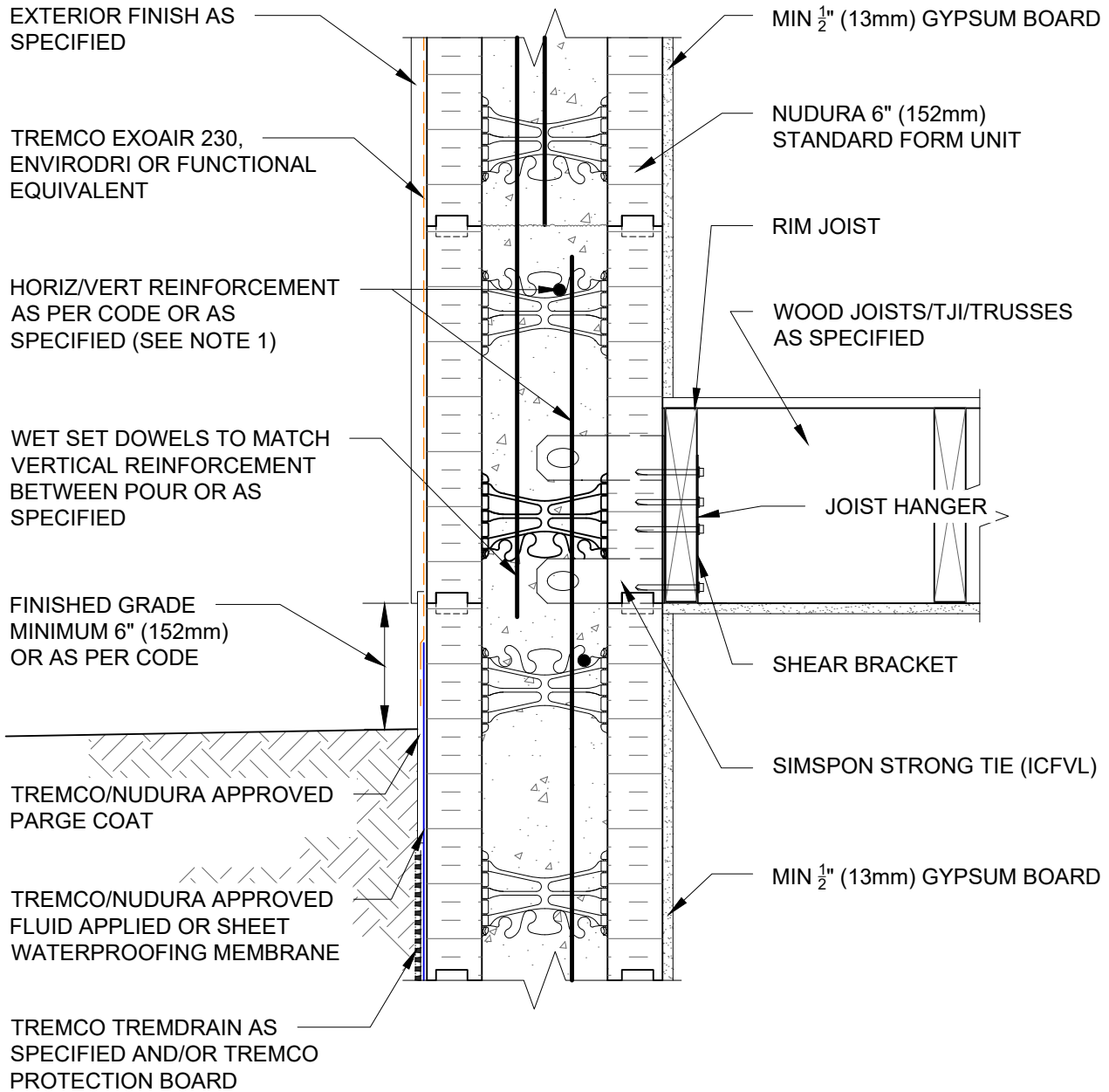
NOTES:
1) FOR OPTIMAL REINFORCEMENT PLACEMENT IN THE NUDURA FORM, SPACING OF HORIZONTAL REINFORCEMENT TO BE SPECIFIED AT 18" (457mm) O.C. AND VERTICAL REINFORCEMENT TO BE SPECIFIED AT MULTIPLES OF 8" (203mm) O.C. REFER TO NUDURA REINFORCEMENT PLACEMENT DETAILS.
2.1) FINISHED GRADE LEVEL SPECIFIED FOR FROST PRONE AREAS. FOR ALTERNATIVE GRADE LEVEL SEE DETAIL C6A34.

This detail is for general informational purposes only. The project design professional determines, in its sole discretion, whether this detail or a functionally equivalent detail is best suited for the project with respect to any architecture, engineering, and design requirements, including any local building code requirements. If this document is not reviewed and the product is not approved for use by a licensed design professional, the customer agrees that the detail may contain substantive flaws requiring correction, and hereby releases Tremco CPG Inc. from any and all liability related to the design and installation of the product. This detail is subject to change without notice. Contact Tremco to ensure you have the most recent version.

Combustible Construction - Floor at Grade

Detail: Nudura 6" (152mm) Form Unit, Simpson Ledger Hanger System, Brick Veneer Finish, Parallel to Wall			File Name:	
Drawn by: TVC	Checked by: KS	Scale: 1:8	C6A23	
Revision #: 04	Revised by: KAB	Date: 3/13/2024		



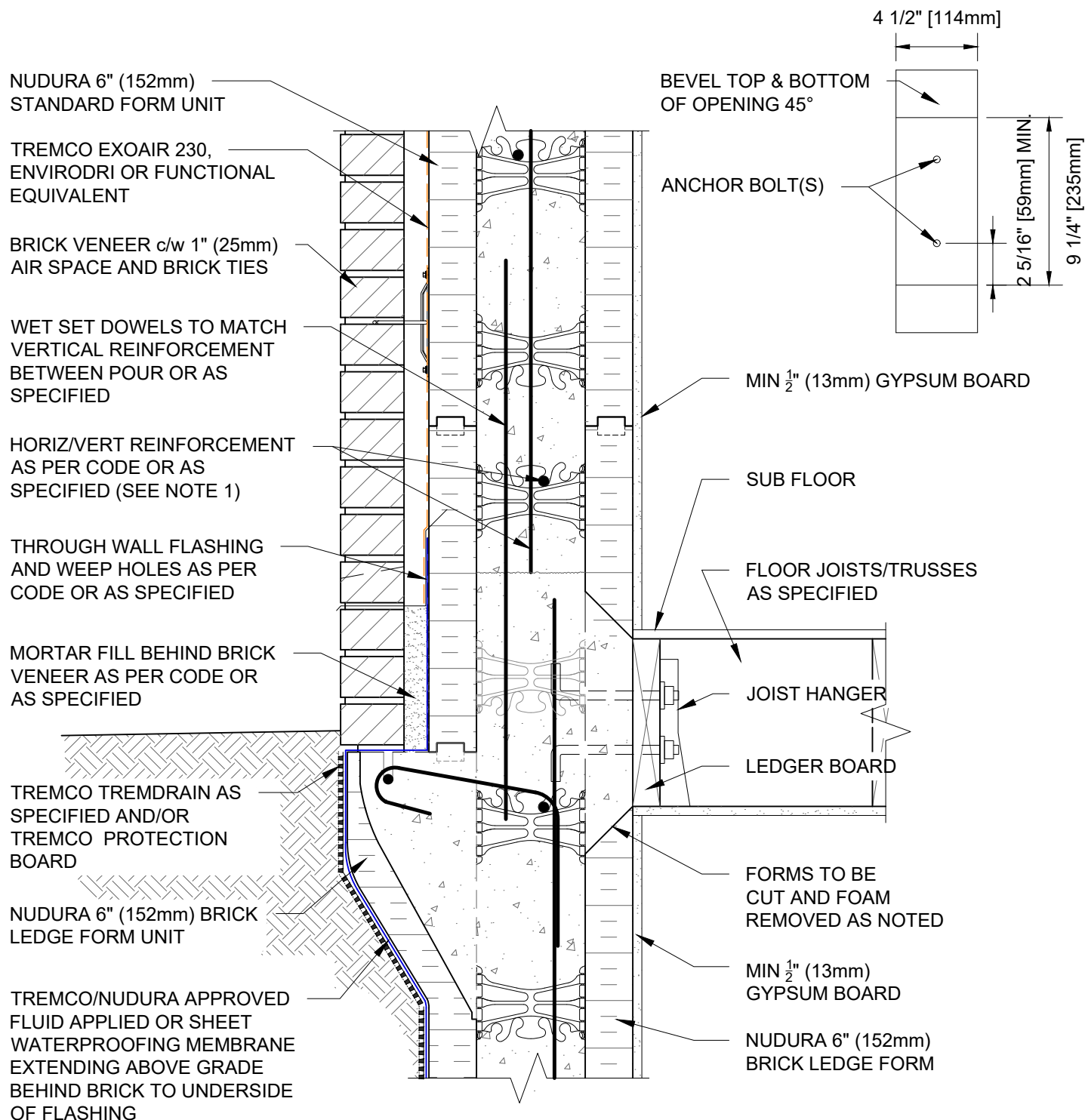


NOTES:

1) FOR OPTIMAL REINFORCEMENT PLACEMENT IN THE NUDURA FORM, SPACING OF HORIZONTAL REINFORCEMENT TO BE SPECIFIED AT 18" (457mm) O.C. AND VERTICAL REINFORCEMENT TO BE SPECIFIED AT MULTIPLES OF 8" (203mm) O.C. REFER TO NUDURA REINFORCEMENT PLACEMENT DETAILS.

This detail is for general informational purposes only. The project design professional determines, in its sole discretion, whether this detail or a functionally equivalent detail is best suited for the project with respect to any architecture, engineering, and design requirements, including any local building code requirements. If this document is not reviewed and the product is not approved for use by a licensed design professional, the customer agrees that the detail may contain substantive flaws requiring correction, and hereby releases Tremco CPG Inc. from any and all liability related to the design and installation of the product. This detail is subject to change without notice. Contact Tremco to ensure you have the most recent version.

Combustible Construction - Floor at Grade



NOTES:

1) FOR OPTIMAL REINFORCEMENT PLACEMENT IN THE NUDURA FORM, SPACING OF HORIZONTAL REINFORCEMENT TO BE SPECIFIED AT 18" (457mm) O.C. AND VERTICAL REINFORCEMENT TO BE SPECIFIED AT MULTIPLES OF 8" (203mm) O.C. REFER TO NUDURA REINFORCEMENT PLACEMENT DETAILS.

2.2) THIS DETAIL IS TO BE USED ONLY AS AN EXAMPLE OF THE POTENTIAL GRADE LEVEL ALLOWED IN SPECIFIC GEOGRAPHICAL LOCATIONS. GRADE LEVEL TO BE VERIFIED BY LOCAL BUILDING CODES OR AS SPECIFIED.

This detail is for general informational purposes only. The project design professional determines, in its sole discretion, whether this detail or a functionally equivalent detail is best suited for the project with respect to any architecture, engineering, and design requirements, including any local building code requirements. If this document is not reviewed and the product is not approved for use by a licensed design professional, the customer agrees that the detail may contain substantive flaws requiring correction, and hereby releases Tremco CPG Inc. from any and all liability related to the design and installation of the product. This detail is subject to change without notice. Contact Tremco to ensure you have the most recent version.

Combustible Construction - Floor at Grade



Nudura Technical Support: 866-468-6299
International: +1 705-726-9499

Detail: Nudura 6" (152mm) Form Unit, Ledger Board Connection,
Brick Veneer Finish, Grade at Brick

Drawn by: JN/NL

Checked by: KS

Scale: 1:8

Revision #: 02

Revised by: KAB

Date: 3/13/2024

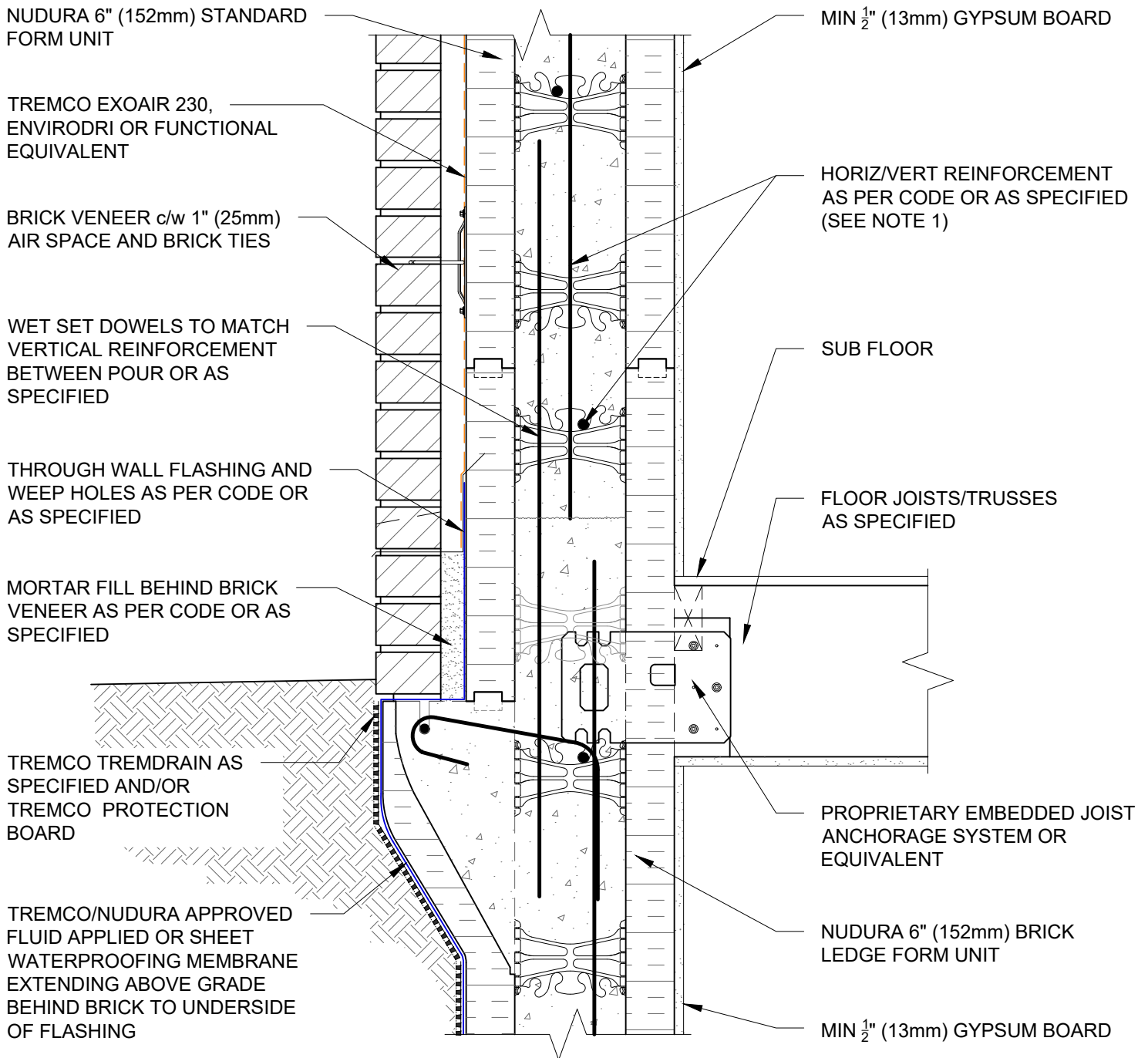
File Name:

C6A29



Construction Products Group

www.tremcocpg.com



- NOTES:
- 1) FOR OPTIMAL REINFORCEMENT PLACEMENT IN THE NUDURA FORM, SPACING OF HORIZONTAL REINFORCEMENT TO BE SPECIFIED AT 18" (457mm) O.C. AND VERTICAL REINFORCEMENT TO BE SPECIFIED AT MULTIPLES OF 8" (203mm) O.C. REFER TO NUDURA REINFORCEMENT PLACEMENT DETAILS.
- 2.2) THIS DETAIL IS TO BE USED ONLY AS AN EXAMPLE OF THE POTENTIAL GRADE LEVEL ALLOWED IN SPECIFIC GEOGRAPHICAL LOCATIONS. GRADE LEVEL TO BE VERIFIED BY LOCAL BUILDING CODES OR AS SPECIFIED.

This detail is for general informational purposes only. The project design professional determines, in its sole discretion, whether this detail or a functionally equivalent detail is best suited for the project with respect to any architecture, engineering, and design requirements, including any local building code requirements. If this document is not reviewed and the product is not approved for use by a licensed design professional, the customer agrees that the detail may contain substantive flaws requiring correction, and hereby releases Tremco CPG Inc. from any and all liability related to the design and installation of the product. This detail is subject to change without notice. Contact Tremco to ensure you have the most recent version.

Combustible Construction - Floor at Grade

Detail: Nudura 6" (152mm) Form Unit, Proprietary Embedded Joist Anchorage System, Brick Veneer Finish

File Name:

Drawn by: JN/NL

Checked by: KS

Scale: 1:8

C6A30

Revision #: 06

Revised by: KAB

Date: 3/13/2024

www.tremcocpg.com



Nudura Technical Support: 866-468-6299
International: +1 705-726-9499



Construction Products Group

NUDURA 6" (152mm) STANDARD
FORM UNIT

TREMCO EXOAIR 230,
ENVIRODRI OR FUNCTIONAL
EQUIVALENT

BRICK VENEER c/w 1" (25mm)
AIR SPACE AND BRICK TIES

HORIZ/VERT REINFORCEMENT AS
PER CODE OR AS SPECIFIED (SEE
NOTE 1)

THROUGH WALL FLASHING
AND WEEP HOLES AS PER
CODE OR AS SPECIFIED

MORTAR FILL BEHIND BRICK
VENEER AS PER CODE OR AS
SPECIFIED

TREMCO TREMDRAIN AS
SPECIFIED AND/OR
TREMCO PROTECTION
BOARD

TREMCO/NUDURA APPROVED
FLUID APPLIED OR SHEET
WATERPROOFING MEMBRANE
EXTENDING ABOVE GRADE
BEHIND BRICK TO UNDERSIDE
OF FLASHING

MIN 1/2" (13mm) GYPSUM BOARD

WET SET DOWELS TO MATCH
VERTICAL REINFORCEMENT
BETWEEN POUR OR AS
SPECIFIED

NUDURA 6" (152mm)
STANDARD FORM UNIT

RIM JOIST

WOOD JOISTS/TJI/TRUSSES
AS SPECIFIED

JOIST HANGER

SHEAR BRACKET

SIMPSON STRONG TIE (ICFVL)

MIN 1/2" (13mm) GYPSUM BOARD

NUDURA 6" (152mm)
BRICK LEDGE FORM

NOTES:

1) FOR OPTIMAL REINFORCEMENT PLACEMENT IN THE NUDURA FORM, SPACING OF HORIZONTAL REINFORCEMENT TO BE SPECIFIED AT 18" (457mm) O.C. AND VERTICAL REINFORCEMENT TO BE SPECIFIED AT MULTIPLES OF 8" (203mm) O.C. REFER TO NUDURA REINFORCEMENT PLACEMENT DETAILS.

2.2) THIS DETAIL IS TO BE USED ONLY AS AN EXAMPLE OF THE POTENTIAL GRADE LEVEL ALLOWED IN SPECIFIC GEOGRAPHICAL LOCATIONS. GRADE LEVEL TO BE VERIFIED BY LOCAL BUILDING CODES OR AS SPECIFIED.

This detail is for general informational purposes only. The project design professional determines, in its sole discretion, whether this detail or a functionally equivalent detail is best suited for the project with respect to any architecture, engineering, and design requirements, including any local building code requirements. If this document is not reviewed and the product is not approved for use by a licensed design professional, the customer agrees that the detail may contain substantive flaws requiring correction, and hereby releases Tremco CPG Inc. from any and all liability related to the design and installation of the product. This detail is subject to change without notice. Contact Tremco to ensure you have the most recent version.

Combustible Construction - Floor at Grade



Nudura Technical Support: 866-468-6299
International: +1 705-726-9499

Detail: Nudura 6" (152mm) Form Unit, Simpson Ledger Hanger System,
Brick Veneer Finish, Grade at Brick

Drawn by: TVC

Checked by: KS

Scale: 1:8

Revision #: 04

Revised by: KAB

Date: 3/13/2024

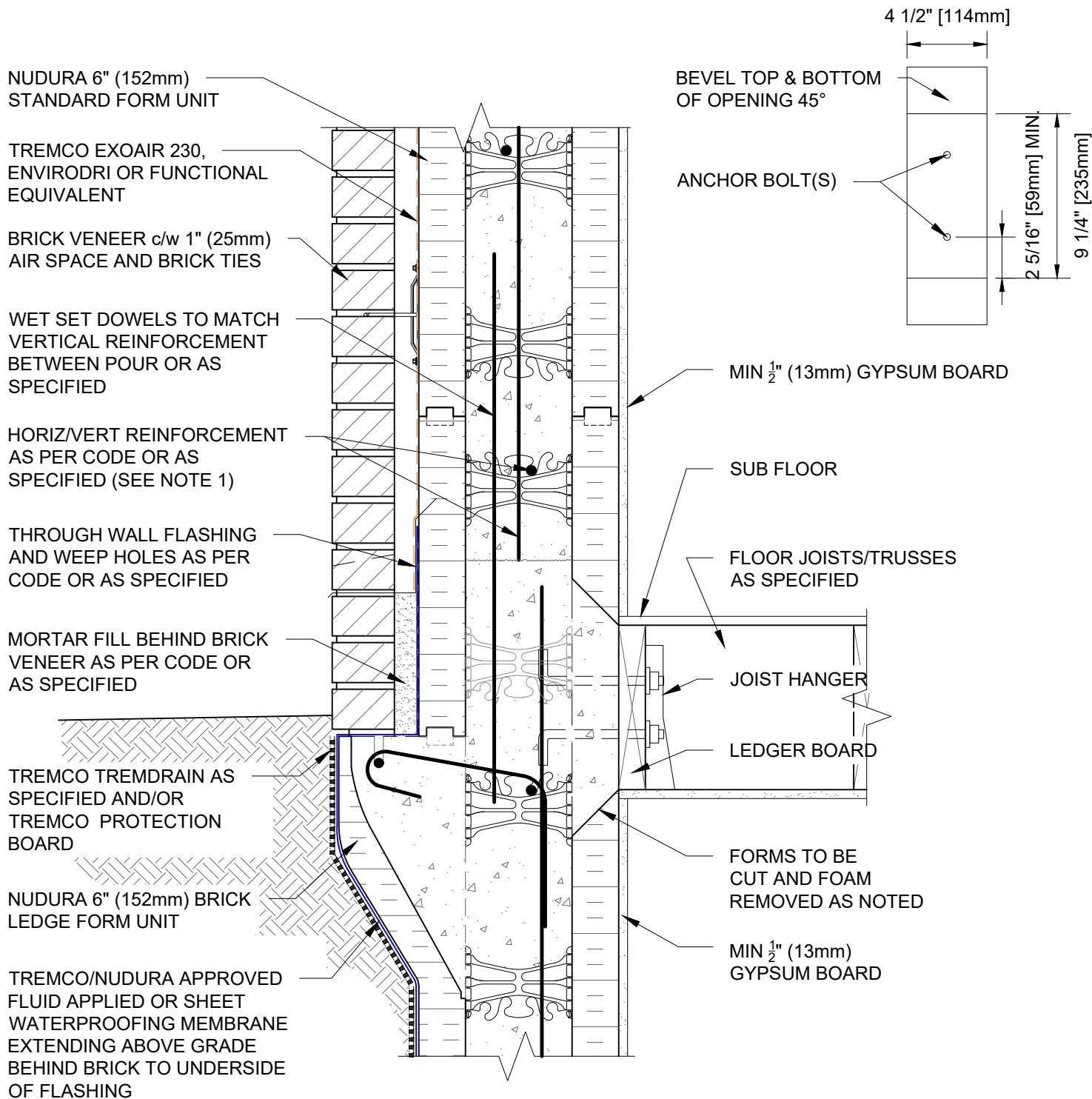
File Name:

C6A31



Construction Products Group

www.tremcocpg.com



NOTES:

1) FOR OPTIMAL REINFORCEMENT PLACEMENT IN THE NUDURA FORM, SPACING OF HORIZONTAL REINFORCEMENT TO BE SPECIFIED AT 18" (457mm) O.C. AND VERTICAL REINFORCEMENT TO BE SPECIFIED AT MULTIPLES OF 8" (203mm) O.C. REFER TO NUDURA REINFORCEMENT PLACEMENT DETAILS.

2.2) THIS DETAIL IS TO BE USED ONLY AS AN EXAMPLE OF THE POTENTIAL GRADE LEVEL ALLOWED IN SPECIFIC GEOGRAPHICAL LOCATIONS. GRADE LEVEL TO BE VERIFIED BY LOCAL BUILDING CODES OR AS SPECIFIED.

This detail is for general informational purposes only. The project design professional determines, in its sole discretion, whether this detail or a functionally equivalent detail is best suited for the project with respect to any architecture, engineering, and design requirements, including any local building code requirements. If this document is not reviewed and the product is not approved for use by a licensed design professional, the customer agrees that the detail may contain substantive flaws requiring correction, and hereby releases Tremco CPG Inc. from any and all liability related to the design and installation of the product. This detail is subject to change without notice. Contact Tremco to ensure you have the most recent version.

Combustible Construction - Floor at Grade



Nudura Technical Support: 866-468-6299
International: +1 705-726-9499

Detail: Nudura 6" (152mm) Form Unit, Ledger Board Connection,
Brick Veneer Finish, Parallel to Wall, Grade at Brick

Drawn by: JN/NL

Checked by: KS

Scale: 1:8

Revision #: 02

Revised by: KAB

Date: 3/13/2024

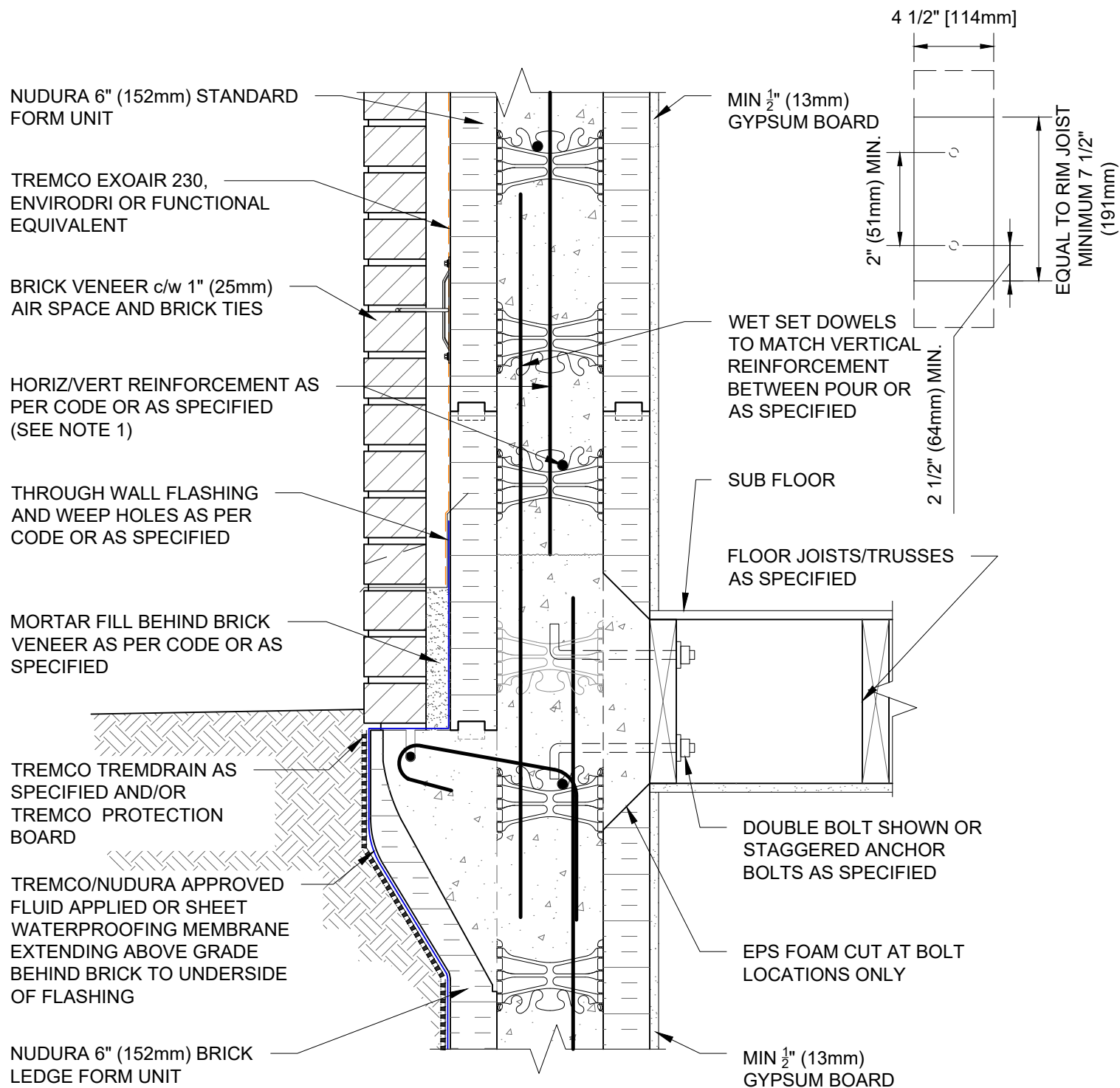
File Name:

C6A32



Construction Products Group

www.tremcocpg.com



NOTES:

1) FOR OPTIMAL REINFORCEMENT PLACEMENT IN THE NUDURA FORM, SPACING OF HORIZONTAL REINFORCEMENT TO BE SPECIFIED AT 18" (457mm) O.C. AND VERTICAL REINFORCEMENT TO BE SPECIFIED AT MULTIPLES OF 8" (203mm) O.C. REFER TO NUDURA REINFORCEMENT PLACEMENT DETAILS.

2.2) THIS DETAIL IS TO BE USED ONLY AS AN EXAMPLE OF THE POTENTIAL GRADE LEVEL ALLOWED IN SPECIFIC GEOGRAPHICAL LOCATIONS. GRADE LEVEL TO BE VERIFIED BY LOCAL BUILDING CODES OR AS SPECIFIED.

This detail is for general informational purposes only. The project design professional determines, in its sole discretion, whether this detail or a functionally equivalent detail is best suited for the project with respect to any architecture, engineering, and design requirements, including any local building code requirements. If this document is not reviewed and the product is not approved for use by a licensed design professional, the customer agrees that the detail may contain substantive flaws requiring correction, and hereby releases Tremco CPG Inc. from any and all liability related to the design and installation of the product. This detail is subject to change without notice. Contact Tremco to ensure you have the most recent version.

Combustible Construction - Floor at Grade



Nudura Technical Support: 866-468-6299
International: +1 705-726-9499

Detail: Nudura 6" (152mm) Form Unit, Proprietary Embedded Joist Multi-Purpose Hanger, Brick Veneer Finish, Grade at Brick

Drawn by: TVC

Checked by: KS

Scale: 1:8

Revision #: 05

Revised by: KAB

Date: 3/13/2024

File Name:

C6A33



Construction Products Group

www.tremcocpg.com

NUDURA 6" (152mm) STANDARD
FORM UNIT

TREMCO EXOAIR 230,
ENVIRODRI OR FUNCTIONAL
EQUIVALENT

BRICK VENEER c/w 1" (25mm)
AIR SPACE AND BRICK TIES

HORIZ/VERT REINFORCEMENT AS
PER CODE OR AS SPECIFIED (SEE
NOTE 1)

THROUGH WALL FLASHING
AND WEEP HOLES AS PER
CODE OR AS SPECIFIED

MORTAR FILL BEHIND BRICK
VENEER AS PER CODE OR AS
SPECIFIED

TREMCO TREMDRAIN AS
SPECIFIED AND/OR
TREMCO PROTECTION
BOARD

TREMCO/NUDURA APPROVED
FLUID APPLIED OR SHEET
WATERPROOFING MEMBRANE
EXTENDING ABOVE GRADE
BEHIND BRICK TO UNDERSIDE
OF FLASHING

MIN ½" (13mm) GYPSUM BOARD

WET SET DOWELS TO MATCH
VERTICAL REINFORCEMENT
BETWEEN POUR OR AS
SPECIFIED

NUDURA 6" (152mm)
STANDARD FORM UNIT

RIM JOIST

WOOD JOISTS/TJI/TRUSSES
AS SPECIFIED

JOIST HANGER

SHEAR BRACKET

SIMPSON STRONG TIE (ICFVL)

MIN ½" (13mm) GYPSUM BOARD

NUDURA 6" (152mm)
BRICK LEDGE FORM

NOTES:

1) FOR OPTIMAL REINFORCEMENT PLACEMENT IN THE NUDURA FORM, SPACING OF HORIZONTAL REINFORCEMENT TO BE SPECIFIED AT 18" (457mm) O.C. AND VERTICAL REINFORCEMENT TO BE SPECIFIED AT MULTIPLES OF 8" (203mm) O.C. REFER TO NUDURA REINFORCEMENT PLACEMENT DETAILS.

2.2) THIS DETAIL IS TO BE USED ONLY AS AN EXAMPLE OF THE POTENTIAL GRADE LEVEL ALLOWED IN SPECIFIC GEOGRAPHICAL LOCATIONS. GRADE LEVEL TO BE VERIFIED BY LOCAL BUILDING CODES OR AS SPECIFIED.

This detail is for general informational purposes only. The project design professional determines, in its sole discretion, whether this detail or a functionally equivalent detail is best suited for the project with respect to any architecture, engineering, and design requirements, including any local building code requirements. If this document is not reviewed and the product is not approved for use by a licensed design professional, the customer agrees that the detail may contain substantive flaws requiring correction, and hereby releases Tremco CPG Inc. from any and all liability related to the design and installation of the product. This detail is subject to change without notice. Contact Tremco to ensure you have the most recent version.

Combustible Construction - Floor at Grade



Nudura Technical Support: 866-468-6299
International: +1 705-726-9499

Detail: Nudura 6" (152mm) Form Unit, Simpson Ledger Hanger System,
Brick Veneer Finish, Parallel to Wall, Grade at Brick

Drawn by: TVC

Checked by: KS

Scale: 1:8

Revision #: 04

Revised by: KAB

Date: 3/13/2024

File Name:

C6A34



Construction Products Group

www.tremcocpg.com